



Language and the
Anthropocene



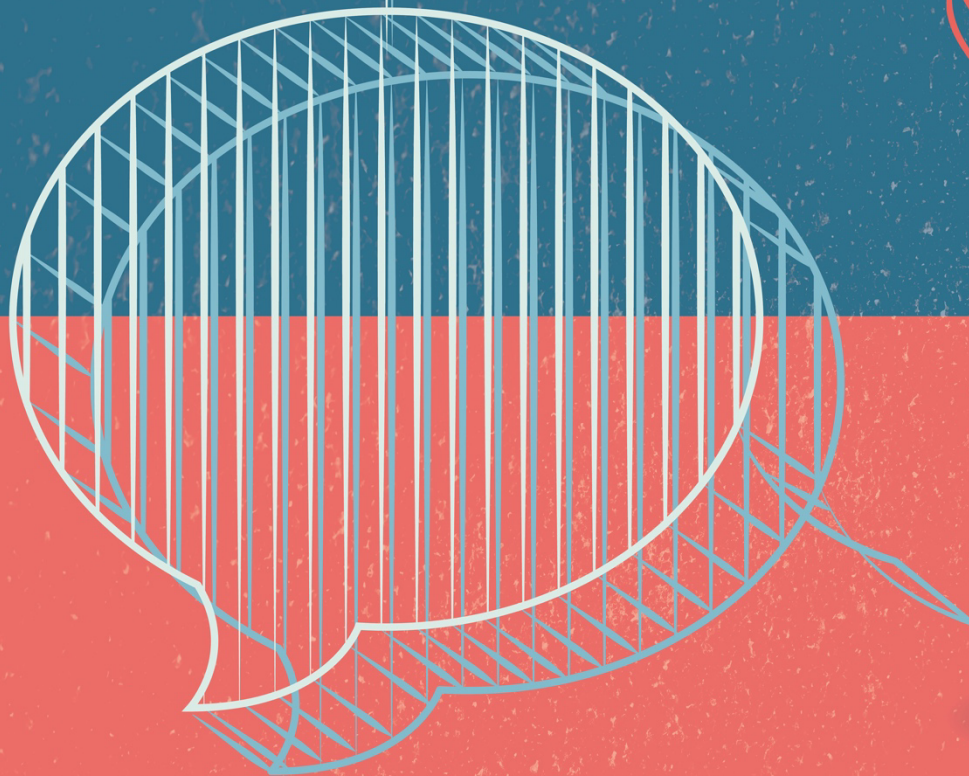
MAX PLANCK INSTITUTE
OF GEOANTHROPOLOGY

Organisers:

Martine Robbeets
& Martijn Knapen

WORKSHOP

LINGUISTIC PREHISTORY AND ECOLOGY IN THE NORTHERN PACIFIC RIM



*Releasing the
ecological
knowledge from
language*

8-29 AUGUST 2024

WORKSHOP PROGRAM

Organisers: Martine Robbeets and Martijn Knapen

Research Group: Language and the Anthropocene, Max Planck Institute of Geoanthropology

Venue: Volkshaus Jena

Please note this is a preliminary program and is subject to change.

Wednesday, 28 August 2024

0900-0915	Registration	
0915-1000	Introduction to the conference	Martine Robbeets and Martijn Knapen (MPI-GEA)
1000-1030	Coffee break and discussion session	
1030-1115	Language, Species, and Culture: Reflections from Historical Ecology	William Balée (Tulane University, New Orleans)
1115-1200	Ethnobotany on Sakhalin: 19th century and present	Hidetoshi Shiraishi (Sapporo Gakuin University), Miki Mizushima (Hokkaido Museum, Sapporo), Itsuji Tangiku (Hokkaido University, Sapporo) and Yoshiko Yamada (Muroran Institute of Technology), and Martijn Knapen (MPI-GEA)
1200-1300	Lunch break	
1300-1345	Reconstruction of the Ecocultural Living Space by Ainu Communities: The Iwor Regeneration Project as a Case Study	Hideyuki Ōnishi (Doshisha Women's College of Liberal Arts, Kyōtanabe)
1345-1430	Ethnolinguistic Aspects of Birch Trees: Tungusic and Beyond	Andreas Hölzl (University of Potsdam)
1430-1515	The Vocabulary of Reindeer Herding in Dolgan within the Context of Dolgan-Evenki Contact	Uluhan Özalan (Abant İzzet Baysal University, Bolu) and Peter Jordan (Lund University)
1515-1545	Coffee break and discussion session	
1545-1630	The Use of Historical Material for the Safeguarding of Endangered Languages	Tjeerd de Graaf (Mercator European Research Centre on Multilingualism and Language Learning, Leeuwarden)
1830-2000	Self-paying dinner among conference participants, venue to be decided	

Thursday, 29 August 2024

0900-0945	Northern Pacific Rim Substratum Interference in Japonic, Koreanic and Tungusic	Martine Robbeets (MPI-GEA)
0945-1030	Prehistoric Lexical Borrowings on the Southern Edge of the North Pacific Rim Ecological Zone	Bingcong Deng (MPI-GEA)
1030-1100	Coffee break and discussion session	
1100-1145	The Anthropocene Engine at Sea: Histories of Marine Food Exploitation in Japan and Iberia	Mark Hudson (MPI-GEA) and Irene M. Muñoz Fernández (Universidad Complutense de Madrid)
1145-1230	Ecology and Yukaghir-Uralic Relationship	Peter Piispanen (Stockholm University) and Václav Blážek (Masaryk University, Brno)
1230-1330	Lunch break	
1330-1415	Prehistoric Language Connections around the Northern Pacific Rim	Michael Fortescue (University of Copenhagen)
1415-1500	Chukotko-Kamchatkan in contact: The view from the Linguistic Evidence	Jessica Kantarovich (The Ohio State University, Columbus, OH)
1500-1530	Coffee break and discussion session	
1530-1615	Paleoecology, Biogeographic Adaption, and the Development of Early Aleut During the Neoglacial Region	Anna Berge (University of Alaska Fairbanks), Ben Potter (University of Alaska Fairbanks) and Matthew Wooler (University of Alaska Fairbanks)
1615-1700	New Linguistic Evidence for the Northern Origin of the Southern Athabaskan Languages	Willem de Reuse (The Language Conservancy)
1830-2000	Self-paying dinner among conference participants, venue to be decided	